

Pompananan Sıvı: Kimyasal ve mekanik olarak aşındırıcı olmayan akışkan. Sıcaklık min=0° C max=40° C.
İzin verilen maksimum kum miktarı = 50 g/m³ izin verilen katı parçacık ölçüsü: Max 2mm
Liquid being pumped: Chemically and mechanically non aggressive. Temperature min=0° C max=40° C.
Maximum allowable solid quantity = 50 g/m³ solid dimension: Max 2mm
Liquide pompé: Chimiquement et mécaniquement non agressif. Temperature min=0° C max=40° C.
Quantité maximale de sable tolérée = 50 g/m³ Diamètre des particules solides: Max 2mm

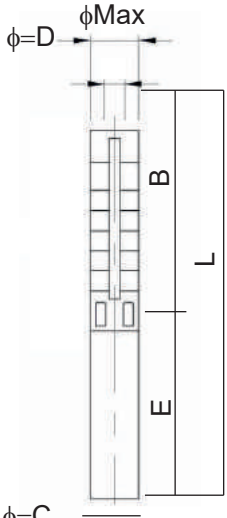
2900 RPM'de çalışma aralığı: Operating range at 2900 RPM: Gamme de fonctionnement à 2900 RPM:	HP= 0,75 - 4 Qmax= 2,4 m ³ /h	En verimli noktada: At the best efficiency point: Au point du meilleur rendement:	Q= 1,8 m ³ /h H= 277 m
---	---	---	--------------------------------------

Maksimum pompa dış çapı (Kablo muhafazası ile birlikte): Maximum pump diameter (Including cable guard): Diametre maximal de pompe (y compris le couvre-cable):	94 mm	Çıkış Çapı: Outlet diameter: Diametre d'orifice de refoulement:	1 1/4"
--	-------	---	--------

Maximum uygulama derinliği: Su seviyesinin 400 m altına kadar. Maximum depth of application: Up to 400 m below the water level Profondeur maximum d'utilisation: Jusqu'à 400 m sous le niveau de l'eau	Maksimum çalışma basıncı: Maximum working pressure: Pression de fonctionnement maxi.:	40 atm
--	---	--------

Minimum sıvı seviyesi: Emiş süzgecinin altından itibaren 600 mm. Minimum liquid level: 600 mm from bottom of suction grid Niveau minimum du liquide: 600 mm au-dessus de la crépine d'aspiration	Maksimum basma yüksekliği: Maximum head: Hauteur manométrique maximal:	354 m
--	--	-------

Fan tipi: Impeller type: Type de roue:	Semiaksiyel Semiaxial Demi axiale	İmalat ve güvenlik standartları: Construction and safety standards: Normes de construction et de sécurité:	TS 11146:1993 TS EN 809:2000 98/37/EC	TS EN ISO 12100-1:2007 TS EN ISO 12100-2:2006
--	---	--	---	--



phi=C



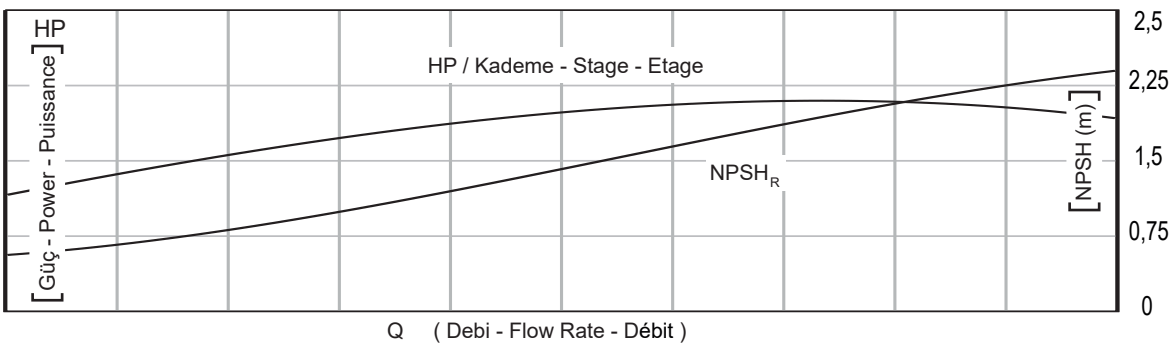
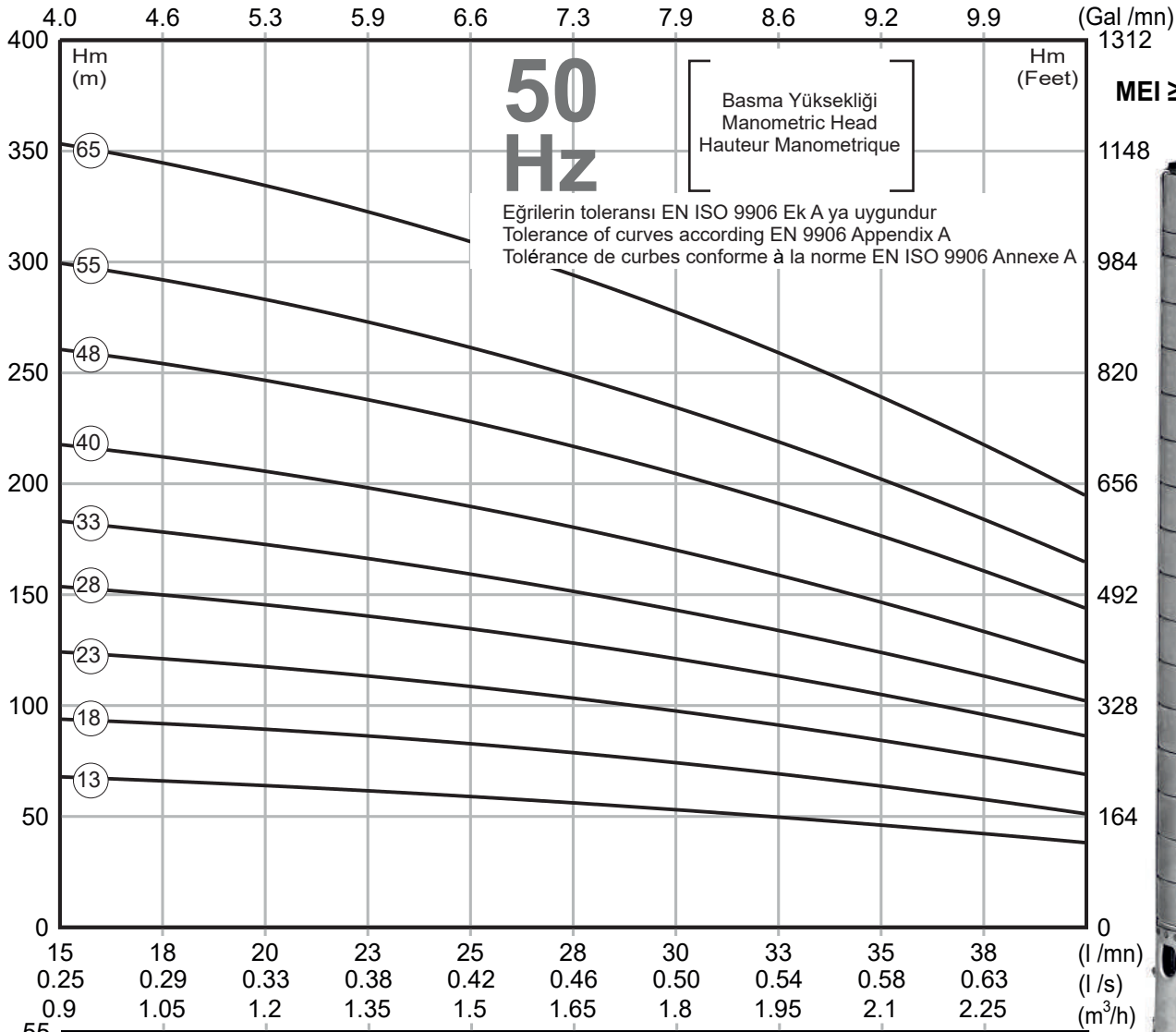
POMPA TIPI PUMP TYPE TYPE DE POMPE	MOTOR MOTEUR		ÖLÇÜLER / DIMENSIONS (mm)								AĞIRLIK / WEIGHT / POIDS (kg)				
			1~	3~	1~	3~	B	Ø = C	Ø = D	Ø MAX	1~	3~	POMPA PUMP POMPE	TOPLAM TOTAL	TOPLAM TOTAL
			L	L	E	E									
S4 SP2 / 13	0,75	0,55	806	-	366	-	440	93	1 1/4"	94	8,8	-	3,8	12,6	-
S4 SP2 / 18	1	0,75	931	911	386	366	545	93	1 1/4"	94	9,7	8,8	4,7	14,4	13,5
S4 SP2 / 23	1,5	1,1	1081	1036	431	386	650	93	1 1/4"	94	11,6	9,7	5,7	17,3	15,4
S4 SP2 / 28	2	1,5	1231	1186	476	431	755	93	1 1/4"	94	13,5	11,6	6,6	20,1	18,2
S4 SP2 / 33	2	1,5	1359	1314	476	431	883	93	1 1/4"	94	13,5	11,6	9,7	23,2	21,3
S4 SP2 / 40	3	2,2	1539	1519	509	489	1030	93	1 1/4"	94	14,7	13,9	11,5	26,2	25,4
S4 SP2 / 48	3	2,2	1707	1687	509	489	1198	93	1 1/4"	94	14,7	13,9	13,5	28,2	27,4
S4 SP2 / 55	4	3	-	1893	-	548	1345	93	1 1/4"	94	-	17,6	15,3	-	32,9
S4 SP2 / 65	4	3	-	2103	-	548	1555	93	1 1/4"	94	-	17,6	17,8	-	35,4

POMPA TIPI PUMP TYPE TYPE DE POMPE	MOTOR MOTEUR		m ³ /h	0,0	0,9	1,2	1,5	1,8	2,1	2,4
	HP	kW		l/sn	0,00	0,25	0,33	0,42	0,50	0,58
S4 SP2 / 13	0,75	0,55	Basma Yüksekliği (m) Head in Meters Hauteur Manométrique Totale En Mètres	77	68	64	58	54	46	38
S4 SP2 / 18	1	0,75		104	94	89	83	74	64	51
S4 SP2 / 23	1,5	1,1		136	124	118	108	98	84	69
S4 SP2 / 28	2	1,5		166	154	145	134	122	105	86
S4 SP2 / 33	2	1,5		195	183	173	159	143	124	102
S4 SP2 / 40	3	2,2		235	218	205	190	170	147	119
S4 SP2 / 48	3	2,2		280	261	246	228	204	178	143
S4 SP2 / 55	4	3		321	300	282	262	234	203	164
S4 SP2 / 65	4	3		379	354	333	310	277	240	194

Katalogtaki hidrolik karakteristikler çekvalf kayıplarını içermez.
Hydraulic characteristics of catalog don't include the loss of check-valve
Les caractéristiques hydrauliques de catalogue ne comprennent pas les pertes dans le clapet de retenue

Dönüş Hızı Rotation Speed Vitesse de Rotation 2900 RPM	Dönüş Yönü / Rotation Saatin Tersi Yönünde Counterclockwise Sens Anti - Horaire	Klepe Çıkışı / Outlet / Sortie 1 ^{1/4} " İçten Pasolu 11 Diş 1 ^{1/4} " Inside Threaded 11 TPI 1 ^{1/4} " Fileté Interieur 11 TPI	Mil Ucu / Shaft End / Fin d'Arbre NEMA Standardına Uygun According to NEMA Standard En Accord Norme NEMA	According to En accord norme EN ISO 9906 Normuna Uygun	Tarih / Date 10 / 2009 Rev. 0
---	--	---	---	---	-------------------------------------

Hidrolik çalışma karakteristikleri 15°C deki suyla ve 1 bar atmosferik basınç altında alınmıştır.
The hydraulic working characteristics have been calculated with water at 15°C at the atmospheric pressure of 1 bar.
Les caractéristiques hydrauliques de fonctionnement ont été prises avec eau à 15°C à la pression atmosphérique de 1 bar.



This product has been designed according to the SGM-2015/44 regulation.

Bu ürün SGM-2015/44 sayılı tebliğe göre tasarlanmıştır.

Performance curves are based on the kinematic viscosity = 1mm² /s and density ρ= 1000 kg /m³.

Performans eğrileri kinematik viskozite η = 1mm² /s ve yoğunluk ρ= 1000 kg /m³ temel alınarak oluşturulmuştur.

S4 SP3

TEKNİK RESİMLER VE TABLOLAR TECHNICAL DRAWINGS AND INFORMATIONS SCHEMAS ET DIAGRAMMES TECHNIQUES

50 Hz

Pompalanan Sıvı: Kimyasal ve mekanik olarak aşındırıcı olmayan akışkan. Sıcaklık min=0° C max=40° C.
İzin verilen maksimum kum miktarı = 50 g/m³ izin verilen katı parçacık ölçüsü: Max 2mm
Liquid being pumped: Chemically and mechanically non aggressive. Temperature min=0° C max=40° C.
Maximum allowable solid quantity = 50 g/m³ solid dimension: Max 2mm
Liquide pompé: Chimiquement et mécaniquement non agressif. Temperature min=0° C max=40° C.
Quantité maximale de sable tolérée = 50 g/m³ Diamètre des particules solides: Max 2mm

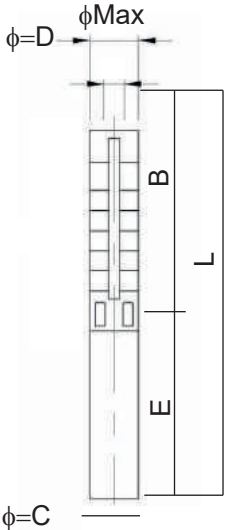
2900 RPM'de çalışma aralığı: Operating range at 2900 RPM: Gamme de fonctionnement à 2900 RPM:	HP= 0,75 - 7,5 Qmax= 4,2 m ³ /h	En verimli noktada: At the best efficiency point: Au point du meilleur rendement:	Q= 3 m ³ /h H= 331 m
---	---	---	------------------------------------

Maksimum pompa dış çapı (Kablo muhafazası ile birlikte): Maximum pump diameter (Including cable guard): Diametre maximal de pompe (y compris le couvre-cable):	94 mm	Çıkış Çapı: Outlet diameter: Diametre d'orifice de refoulement:	1 1/4"
--	-------	---	--------

Maximum uygulama derinliği: Su seviyesinin 400 m altına kadar. Maximum depth of application: Up to 400 m below the water level Profondeur maximum d'utilisation: Jusqu'à 400 m sous le niveau de l'eau	Maksimum çalışma basıncı: Maximum working pressure: Pression de fonctionnement maxi.:	40 atm
--	---	--------

Minimum sıvı seviyesi: Emiş süzgecinin altından itibaren 600 mm. Minimum liquid level: 600 mm from bottom of suction grid Niveau minimum du liquide: 600 mm au-dessus de la crépine d'aspiration	Maksimum basma yüksekliği: Maximum head: Hauteur manométrique maximal:	420 m
--	--	-------

Fan tipi: Impeller type: Type de roue:	Semiaksiyel Semiaxial Demi axiale	İmalat ve güvenlik standartları: Construction and safety standards: Normes de construction et de sécurité:	TS 11146:1993 TS EN 809:2000 98/37/EC	TS EN ISO 12100-1:2007 TS EN ISO 12100-2:2006
--	---	--	---	--



phi=C



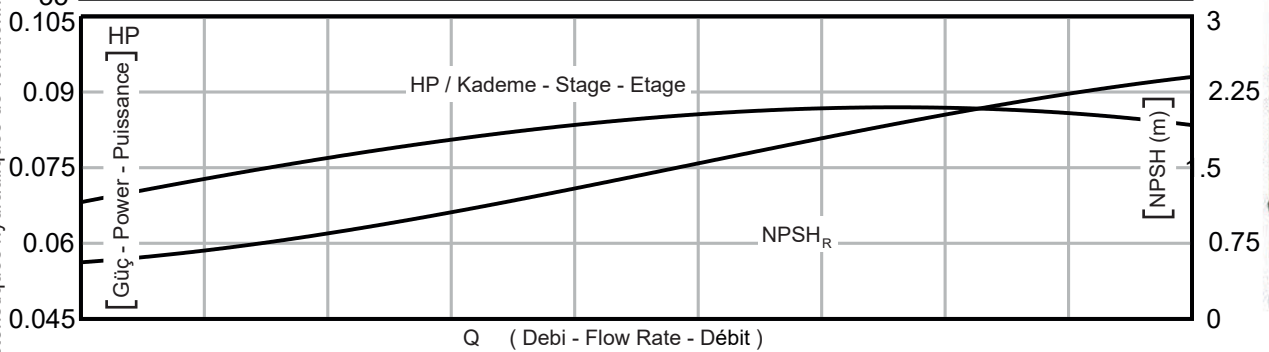
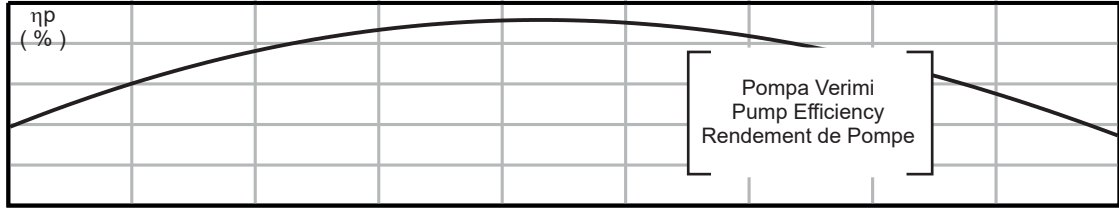
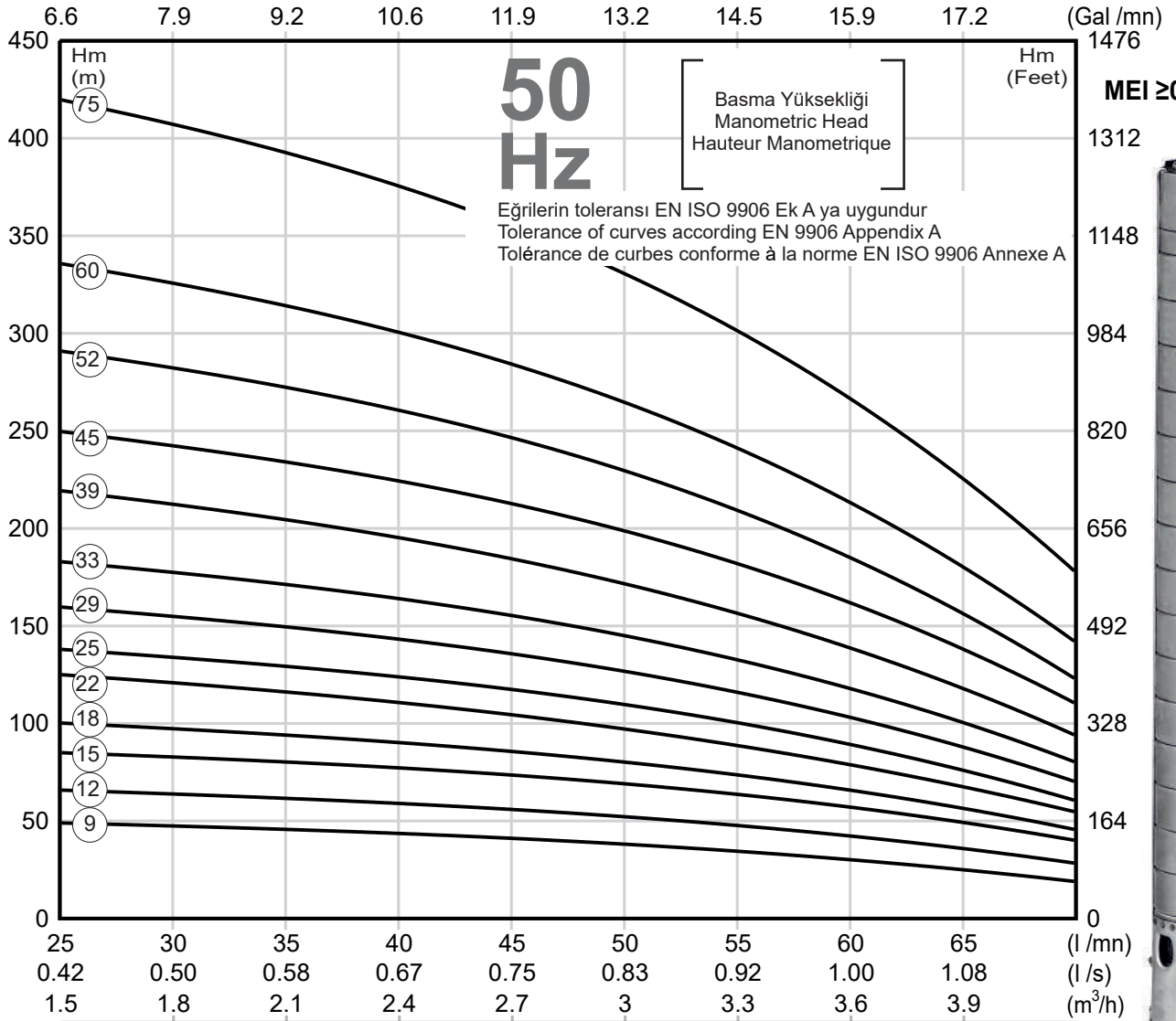
POMPA TİPİ PUMP TYPE TYPE DE POMPE	MOTOR MOTEUR		ÖLÇÜLER / DIMENSIONS (mm)								AĞIRLIK / WEIGHT / POIDS (kg)				
			1~	3~	1~	3~				1~	3~				
			HP	KW	L	L	E	E	B	Ø = C	Ø = D	Ø MAX	MOTOR MOTEUR	POMPA PUMP POMPE	TOPLAM TOTAL
S4 SP3 / 09	0,75	0,55	722	-	366	-	356	93	1 1/4"	94	8,8	-	3	11,8	-
S4 SP3 / 12	1	0,75	805	785	386	366	419	93	1 1/4"	94	9,7	8,8	3,6	13,3	12,4
S4 SP3 / 15	1,5	1,1	913	868	431	386	482	93	1 1/4"	94	11,6	9,7	4,2	15,8	13,9
S4 SP3 / 18	1,5	1,1	976	931	431	386	545	93	1 1/4"	94	11,6	9,7	4,7	16,3	14,4
S4 SP3 / 22	2	1,5	1105	1060	476	431	629	93	1 1/4"	94	13,5	11,6	5,5	19,0	17,1
S4 SP3 / 25	2	1,5	1168	1123	476	431	692	93	1 1/4"	94	13,5	11,6	6,1	19,6	17,7
S4 SP3 / 29	3	2,2	1285	1265	509	489	776	93	1 1/4"	94	14,7	13,9	6,8	21,5	20,7
S4 SP3 / 33	3	2,2	1392	1372	509	489	883	93	1 1/4"	94	14,7	13,9	9,7	24,4	23,6
S4 SP3 / 39	4	3	-	1557	-	548	1009	93	1 1/4"	94	-	17,6	11,2	-	28,8
S4 SP3 / 45	4	3	-	1683	-	548	1135	93	1 1/4"	94	-	17,6	12,7	-	30,3
S4 SP3 / 52	5,5	4	-	1900	-	618	1282	93	1 1/4"	94	-	20,9	14,5	-	35,4
S4 SP3 / 60	5,5	4	-	2068	-	618	1450	93	1 1/4"	94	-	20,9	16,5	-	37,4
S4 SP3 / 75	7,5	5,5	-	2453	-	688	1765	93	1 1/4"	94	-	24,0	20,3	-	44,3

POMPA TİPİ PUMP TYPE TYPE DE POMPE	MOTOR MOTEUR		m ³ /h	0,0	1,5	1,8	2,1	2,4	2,7	3,0	3,6	4,2
	HP	KW	l/sn	0,00	0,42	0,50	0,58	0,67	0,75	0,83	1,00	1,17
S4 SP3 / 09	0,75	0,55	Basma Yüksekliği (m) Head in Metres Hauteur Manométrique Totale En Metres	57	49	47	46	44	41	38	30	19
S4 SP3 / 12	1	0,75		77	66	64	62	58	56	52	43	28
S4 SP3 / 15	1,5	1,1		97	85	83	80	77	74	69	57	40
S4 SP3 / 18	1,5	1,1		116	101	97	94	90	85	80	67	45
S4 SP3 / 22	2	1,5		143	127	120	115	110	105	97	80	54
S4 SP3 / 25	2	1,5		160	139	134	128	124	117	110	90	60
S4 SP3 / 29	3	2,2		185	160	155	149	143	136	127	103	70
S4 SP3 / 33	3	2,2		211	183	177	172	164	155	145	118	80
S4 SP3 / 39	4	3		252	219	213	204	195	185	172	138	94
S4 SP3 / 45	4	3		288	250	243	233	224	213	199	162	110
S4 SP3 / 52	5,5	4		334	291	282	272	261	247	230	184	123
S4 SP3 / 60	5,5	4		385	336	325	314	301	285	265	212	142
S4 SP3 / 75	7,5	5,5		481	420	406	393	376	356	331	265	178

Katalogtaki hidrolik karakteristikler çekvalf kayıplarını içermez.
Hydraulic characteristics of catalog don't include the loss of check-valve
Les caractéristiques hydrauliques de catalogue ne comprennent pas les pertes dans le clapet de retenue

Dönüş Hızı Rotation Speed Vitesse de Rotation 2900 RPM	Dönüş Yönü / Rotation Saatin Tersi Yönünde Counterclockwise Sens Anti - Horaire	Klepe Çıkışı / Outlet / Sortie 1 ^{1/4"} İçten Pasolu 11 Diş 1 ^{1/4"} Inside Threaded 11 TPI 1 ^{1/4"} Fileté Interieur 11 TPI	Mil Ucu / Shaft End / Fin d'Arbre NEMA Standardına Uygun According to NEMA Standard En Accord Norme NEMA	According to En accord norme EN ISO 9906 Normuna Uygun	Tarih / Date 10 / 2009
					Rev. 0

Hidrolik çalışma karakteristikleri 15°C deki suyla ve 1 bar atmosferik basınç altında alınmıştır.
The hydraulic working characteristics have been calculated with water at 15°C at the atmospheric pressure of 1 bar
Les caractéristiques hydrauliques de fonctionnement ont été prises avec eau à 15°C à la pression atmosphérique de 1 bar



This product has been designed according to the SGM-2015/44 regulation.

Bu ürün SGM-2015/44 sayılı tebliğe göre tasarlanmıştır.

Performance curves are based on the kinematic viscosity = 1mm² /s and density ρ= 1000 kg /m³.

Performans eğrileri kinematik viskozite η = 1mm² /s ve yoğunluk ρ= 1000 kg /m³ temel alınarak oluşturulmuştur.

Pompalanan Sıvı: Kimyasal ve mekanik olarak aşındırıcı olmayan akışkan. Sıcaklık min=0° C max=40° C.
İzin verilen maksimum kum miktarı = 50 g/m³ izin verilen katı parçacık ölçüsü: Max 2mm
Liquid being pumped: Chemically and mechanically non aggressive. Temperature min=0° C max=40° C.
Maximum allowable solid quantity = 50 g/m³ solid dimension: Max 2mm
Liquide pompé: Chimiquement et mécaniquement non agressif. Temperature min=0° C max=40° C.
Quantité maximale de sable tolérée = 50 g/m³ Diamètre des particules solides: Max 2mm

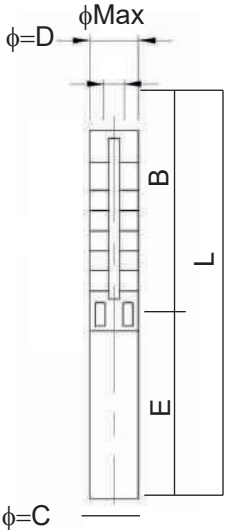
2900 RPM'de çalışma aralığı: Operating range at 2900 RPM: Gamme de fonctionnement à 2900 RPM:	HP= 0,75 - 7,5 Qmax= 6 m ³ /h	En verimli noktada: At the best efficiency point: Au point du meilleur rendement:	Q= 4,2 m ³ /h H= 276 m
---	---	---	--------------------------------------

Maksimum pompa dış çapı (Kablo muhafazası ile birlikte): Maximum pump diameter (Including cable guard): Diametre maximal de pompe (y compris le couvre-cable):	94 mm	Çıkış Çapı: Outlet diameter: Diametre d'orifice de refoulement:	1 1/2"
--	-------	---	--------

Maximum uygulama derinliği: Su seviyesinin 400 m altına kadar. Maximum depth of application: Up to 400 m below the water level Profondeur maximum d'utilisation: Jusqu'à 400 m sous le niveau de l'eau	Maksimum çalışma basıncı: Maximum working pressure: Pression de fonctionnement maxi.:	40 atm
--	---	--------

Minimum sıvı seviyesi: Emiş süzgecinin altından itibaren 600 mm. Minimum liquid level: 600 mm from bottom of suction grid Niveau minimum du liquide: 600 mm au-dessus de la crépine d'aspiration	Maksimum basma yüksekliği: Maximum head: Hauteur manométrique maximale:	323 m
--	---	-------

Fan tipi: Impeller type: Type de roue:	Semiaksiyel Semi axial Demi axiale	İmalat ve güvenlik standartları: Construction and safety standards: Normes de construction et de sécurité:	TS 11146:1993 TS EN 809:2000 98/37/EC	TS EN ISO 12100-1:2007 TS EN ISO 12100-2:2006
--	--	--	---	--



phi=C



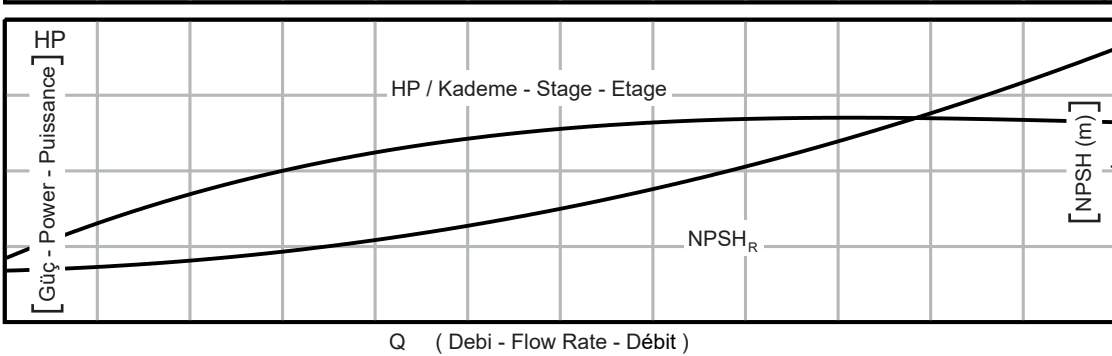
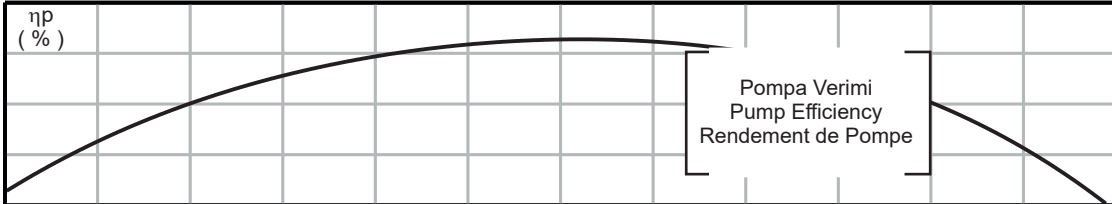
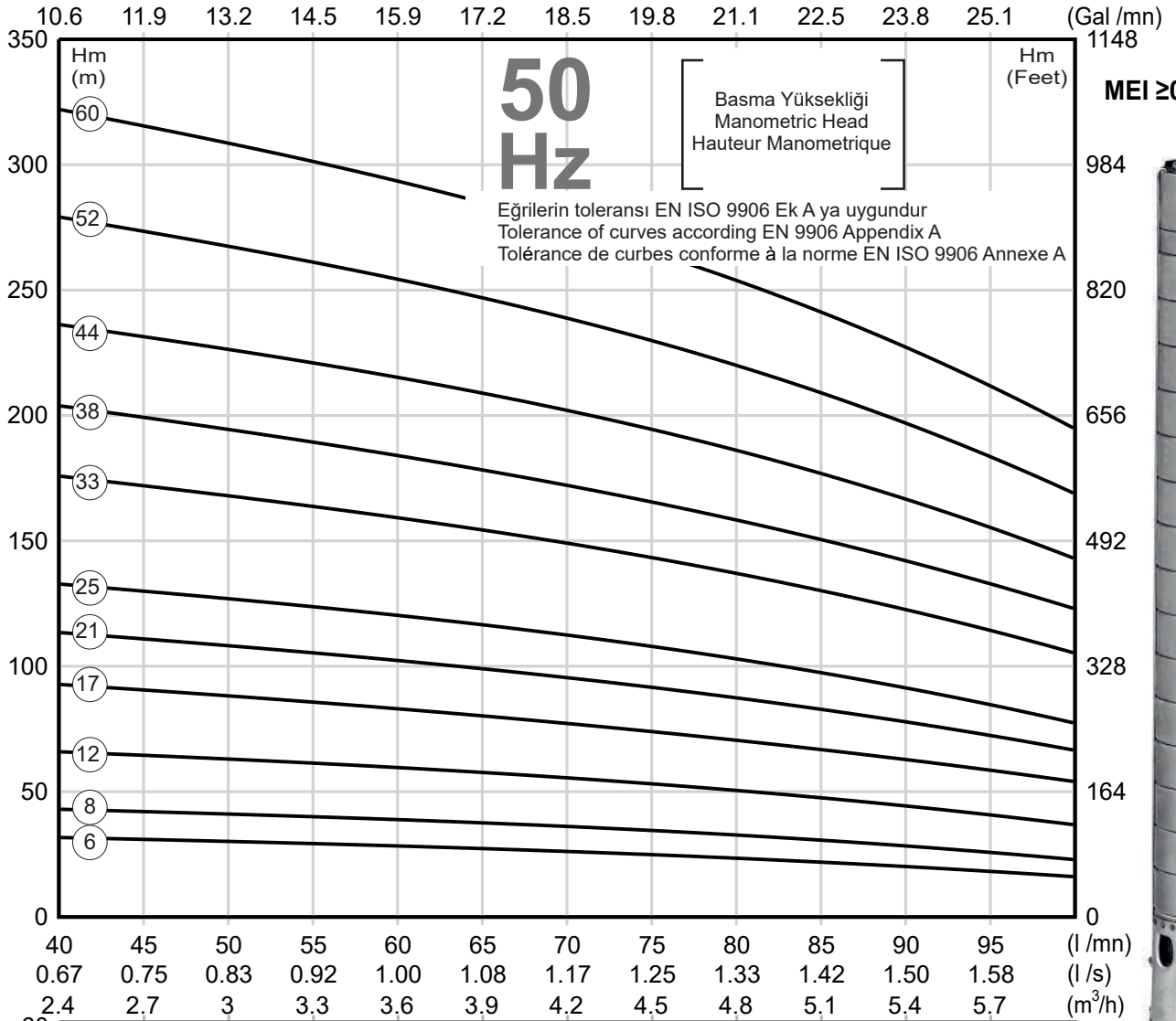
POMPA TIPI PUMP TYPE TYPE DE POMPE	MOTOR MOTEUR		ÖLÇÜLER / DIMENSIONS (mm)								AĞIRLIK / WEIGHT / POIDS (kg)					
			1~		3~		1~		3~		1~		3~		1~	3~
			HP	KW	L	L	E	E	B	Ø = C	Ø = D	Ø MAX	MOTOR MOTEUR	POMPA PUMP POMPE	TOPLAM TOTAL	TOPLAM TOTAL
S4 SP4 / 06	0,75	0,55	659	-	366	-	293	93	1 1/2"	94	8,8	-	2,4	11,2	-	
S4 SP4 / 08	1	0,75	721	701	386	366	335	93	1 1/2"	94	9,7	8,8	2,8	12,5	11,6	
S4 SP4 / 12	1,5	1,1	850	805	431	386	419	93	1 1/2"	94	11,6	9,7	3,6	15,2	13,3	
S4 SP4 / 17	2	1,5	1000	955	476	431	524	93	1 1/2"	94	13,5	11,6	4,5	18,0	16,1	
S4 SP4 / 21	3	2,2	1117	1097	509	489	608	93	1 1/2"	94	14,7	13,9	5,3	20,0	19,2	
S4 SP4 / 25	3	2,2	1201	1181	509	489	692	93	1 1/2"	94	14,7	13,9	6	20,7	19,9	
S4 SP4 / 33	4	3	-	1416	-	548	868	93	1 1/2"	94	-	17,6	9,6	-	27,2	
S4 SP4 / 38	5,5	4	-	1591	-	618	973	93	1 1/2"	94	-	20,9	10,9	-	31,8	
S4 SP4 / 44	5,5	4	-	1717	-	618	1099	93	1 1/2"	94	-	20,9	12,4	-	33,3	
S4 SP4 / 52	7,5	5,5	-	1955	-	688	1267	93	1 1/2"	94	-	24,0	14,4	-	38,4	
S4 SP4 / 60	7,5	5,5	-	2123	-	688	1435	93	1 1/2"	94	-	24,0	16,4	-	40,4	

POMPA TIPI PUMP TYPE TYPE DE POMPE	MOTOR MOTEUR		m ³ /h	0,0	2,4	2,7	3,0	3,6	4,2	4,8	5,4	6,0
	HP	KW										
S4 SP4 / 06	0,75	0,55	Basma Yüksekliği (m) Head In Meters Hauteur Manométrique Totale En Metres	38	32	31	30	28	26	24	20	16
S4 SP4 / 08	1	0,75		52	43	42	41	39	36	33	28	23
S4 SP4 / 12	1,5	1,1		77	66	64	63	60	56	50	44	37
S4 SP4 / 17	2	1,5		108	93	90	88	84	77	70	63	54
S4 SP4 / 21	3	2,2		134	113	111	108	103	96	87	77	67
S4 SP4 / 25	3	2,2		157	133	129	127	121	113	103	90	78
S4 SP4 / 33	4	3		209	176	172	168	159	149	137	123	105
S4 SP4 / 38	5,5	4		242	204	199	194	185	172	158	142	123
S4 SP4 / 44	5,5	4		279	237	231	226	215	202	187	166	143
S4 SP4 / 52	7,5	5,5		330	280	273	267	254	239	221	196	169
S4 SP4 / 60	7,5	5,5	381	323	315	308	293	276	255	226	195	

Katalogtaki hidrolik karakteristikler çekvalf kayıplarını içermez.
Hydraulic characteristics of catalog don't include the loss of check-valve
Les caractéristiques hydrauliques de catalogue ne comprennent pas les pertes dans le clapet de retenue

Dönüş Hızı Rotation Speed Vitesse de Rotation 2900 RPM	Dönüş Yönü / Rotation Saatin Tersi Yönünde Counterclockwise Sens Anti - Horaire	Klepe Çıkışı / Outlet / Sortie 1 ^{1/2"} İçten Pasolu 11 Diş 1 ^{1/2"} Inside Threaded 11 TPI 1 ^{1/2"} Fileté Interieur 11 TPI	Mil Ucu / Shaft End / Fin d'Arbre NEMA Standardına Uygun According to NEMA Standard En Accord Norme NEMA	According to En accord norme EN ISO 9906 Normuna Uygun	Tarih / Date 10 / 2009 Rev. 0
---	--	--	---	---	-------------------------------------

Hidrolik çalışma karakteristikleri 15°C deki suyla ve 1 bar atmosferik basınç altında alınmıştır.
The hydraulic working characteristics have been calculated with water at 15°C at the atmospheric pressure of 1 bar
Les caractéristiques hydrauliques de fonctionnement ont été prises avec eau à 15°C à la pression atmosphérique de 1 bar



This product has been designed according to the SGM-2015/44 regulation.

Bu ürün SGM-2015/44 sayılı tebliğe göre tasarlanmıştır.

Performance curves are based on the kinematic viscosity = 1mm² /s and density ρ= 1000 kg /m³.

Performans eğrileri kinematik viskozite η = 1mm² /s ve yoğunluk ρ= 1000 kg /m³ temel alınarak oluşturulmuştur.

Pompalanan Sıvı: Kimyasal ve mekanik olarak aşındırıcı olmayan akışkan. Sıcaklık min=0°C max=40°C.
İzin verilen maksimum kum miktarı = 50 g/m³ izin verilen katı parçacık ölçüsü: Max 2mm
Liquid being pumped: Chemically and mechanically non aggressive. Temperature min=0°C max=40°C.
Maximum allowable solid quantity = 50 g/m³ solid dimension: Max 2mm
Liquide pompé: Chimiquement et mécaniquement non agressif. Temperature min=0°C max=40°C.
Quantité maximale de sable tolérée = 50 g/m³ Diamètre des particules solides: Max 2mm

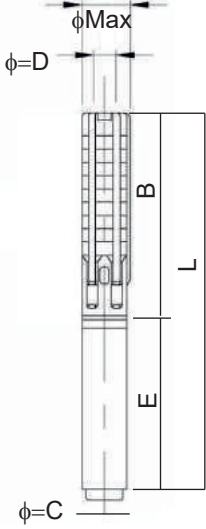
2900 RPM'de çalışma aralığı: Operating range at 2900 RPM: Gamme de fonctionnement à 2900 RPM:	HP= 1 - 10 Qmax= 11 m ³ /h	En verimli noktada: At the best efficiency point: Au point du meilleur rendement:	Q= 7,8 m ³ /h H= 210 m
---	--	---	--------------------------------------

Maksimum pompa dış çapı (Kablo muhafazası ile birlikte): Maximum pump diameter (Including cable guard): Diametre maximal de pompe (y compris le couvre-cable):	94 mm	Çıkış Çapı: Outlet diameter: Diametre d'orifice de refoulement:	2"
--	-------	---	----

Maximum uygulama derinliği: Su seviyesinin 400 m altına kadar. Maximum depth of application: Up to 400 m below the water level Profondeur maximum d'utilisation: Jusqu'à 400 m sous le niveau de l'eau	Maksimum çalışma basıncı: Maximum working pressure: Pression de fonctionnement maxi.:	40 atm
--	---	--------

Minimum sıvı seviyesi: Emiş süzgecinin altından itibaren 600 mm. Minimum liquid level: 600 mm from bottom of suction grid Niveau minimum du liquide: 600 mm au-dessus de la crépine d'aspiration	Maksimum basma yüksekliği: Maximum head: Hauteur manométrique maximale:	255 m
--	---	-------

Fan tipi: Impeller type: Type de roue:	Semiaksiyel Semi axial Demi axiale	İmalat ve güvenlik standartları: Construction and safety standards: Normes de construction et de sécurité:	TS 11146:1993 TS EN 809:2000 98/37/EC	TS EN ISO 12100-1:2007 TS EN ISO 12100-2:2006
--	--	--	---	--



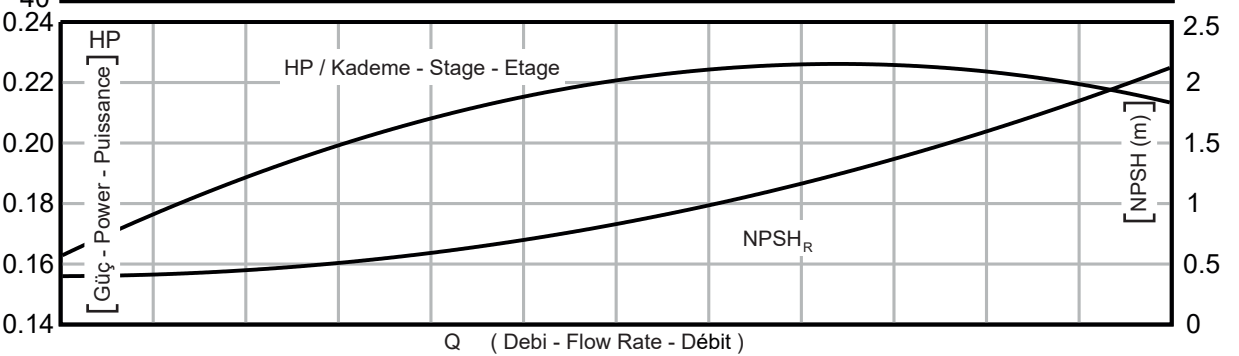
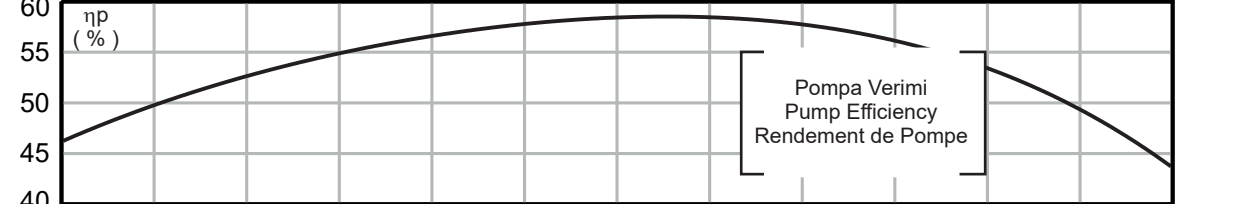
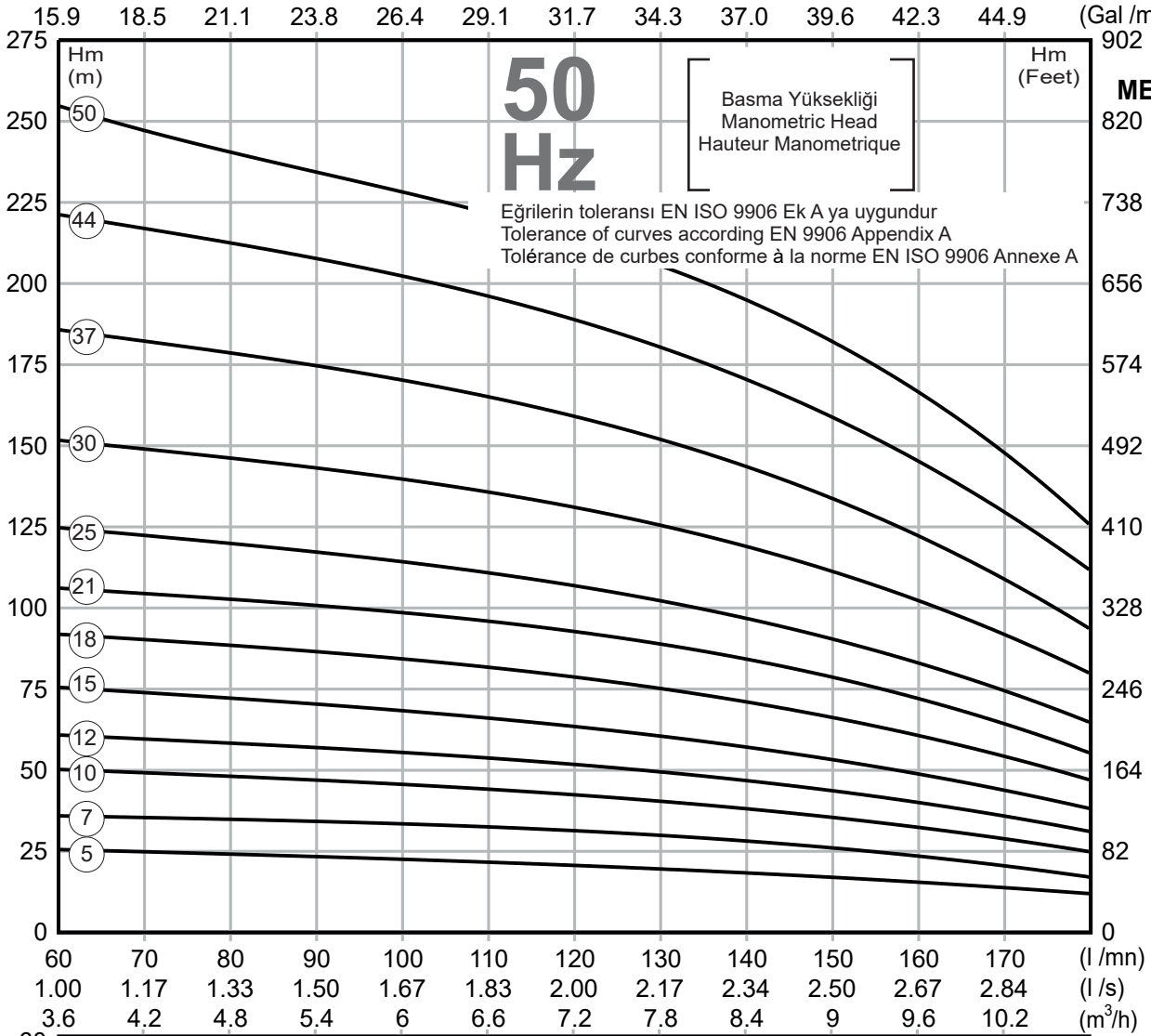
POMPA TİPİ PUMP TYPE TYPE DE POMPE	MOTOR MOTEUR		ÖLÇÜLER / DIMENSIONS (mm)								AĞIRLIK / WEIGHT / POIDS (kg)				
			1~	3~	1~	3~				1~	3~				
			HP	KW	L	L	E	E	B	Ø = C	Ø = D	Ø MAX	MOTOR MOTEUR	POMPA PUMP POMPE	TOPLAM TOTAL
S4 SP8 / 05	1	0,75	798	778	386	366	412	93	2"	94	9,7	8,8	4,3	14,0	13,1
S4 SP8 / 07	1,5	1,1	927	882	431	386	496	93	2"	94	11,6	9,7	5,3	16,9	15,0
S4 SP8 / 10	2	1,5	1098	1053	476	431	622	93	2"	94	13,5	11,6	6,8	20,3	18,4
S4 SP8 / 12	3	2,2	1215	1195	509	489	706	93	2"	94	14,7	13,9	7,8	22,5	21,7
S4 SP8 / 15	3	2,2	1341	1321	509	489	832	93	2"	94	14,7	13,9	9,3	24,0	23,2
S4 SP8 / 18	4	3	-	1506	-	548	958	93	2"	94	-	17,6	10,8	-	28,4
S4 SP8 / 21	5,5	4	-	1702	-	618	1084	93	2"	94	-	20,9	12,3	-	33,2
S4 SP8 / 25	5,5	4	-	1870	-	618	1252	93	2"	94	-	20,9	14,3	-	35,2
S4 SP8 / 30	7,5	5,5	-	2150	-	688	1462	93	2"	94	-	24,0	16,8	-	40,8
S4 SP8 / 37	7,5	5,5	-	2441	-	688	1753	93	2"	94	-	24,0	20,3	-	44,3
S4 SP8 / 44	10	7,5	-	2815	-	768	2047	93	2"	94	-	28,0	23,8	-	51,8
S4 SP8 / 50	10	7,5	-	3067	-	768	2299	93	2"	94	-	28,0	26,8	-	54,8

POMPA TİPİ PUMP TYPE TYPE DE POMPE	MOTOR MOTEUR		Basma Yüksekliği (m) Head in Meters Hauteur Manométrique Totale En Metres										
			m ³ /h	0,0	3,6	4,2	4,8	5,4	6,0	7,2	8,4	9,6	10,8
			HP	KW	l/sn	0,00	1,00	1,17	1,33	1,50	1,67	2,00	2,33
S4 SP8 / 05	1	0,75		30	26	25	24	23	22	21	19	15	12
S4 SP8 / 07	1,5	1,1		41	36	35	35	34	34	32	27	24	17
S4 SP8 / 10	2	1,5		58	51	49	47	47	46	43	38	32	25
S4 SP8 / 12	3	2,2		71	61	60	58	57	55	52	47	40	31
S4 SP8 / 15	3	2,2		87	76	74	72	70	68	64	57	49	38
S4 SP8 / 18	4	3		104	93	90	88	86	84	79	72	60	47
S4 SP8 / 21	5,5	4		122	107	105	102	100	98	93	85	72	55
S4 SP8 / 25	5,5	4		144	126	123	119	116	114	107	97	84	64
S4 SP8 / 30	7,5	5,5		174	154	149	145	142	139	131	120	103	79
S4 SP8 / 37	7,5	5,5		215	188	183	177	173	169	160	145	122	93
S4 SP8 / 44	10	7,5		256	224	218	210	206	201	190	172	145	111
S4 SP8 / 50	10	7,5		291	255	248	239	234	228	216	195	165	126

Katalogtaki hidrolik karakteristikler çekvalf kayıplarını içermez.
Hydraulic characteristics of catalog don't include the loss of check-valve
Les caractéristiques hydrauliques de catalogue ne comprennent pas les pertes dans le clapet de retenue

Dönüş Hızı Rotation Speed Vitesse de Rotation 2900 RPM	Dönüş Yönü / Rotation Saatin Tersi Yönünde Counterclockwise Sens Anti - Horaire	Klepe Çıkışı / Outlet / Sortie 2" İçten Pasolu 11 Diş 2" Inside Threaded 11 TPI 2" Fileté Interieur 11 TPI	Mil Ucu / Shaft End / Fin d'Arbre NEMA Standardına Uygun According to NEMA Standard En Accord Norme NEMA	According to En accord norme EN ISO 9906 Normuna Uygun	Tarih / Date 10 / 2009
					Rev. 0

Hidrolik çalışma karakteristikleri 15°C deki suyla ve 1 bar atmosferik basınç altında alınmıştır.
The hydraulic working characteristics have been calculated with water at 15°C at the atmospheric pressure of 1 bar
Les caractéristiques hydrauliques de fonctionnement ont été prises avec eau à 15°C à la pression atmosphérique de 1 bar



This product has been designed according to the SGM-2015/44 regulation.

Bu ürün SGM-2015/44 sayılı tebliğe göre tasarlanmıştır.

Performance curves are based on the kinematic viscosity $\eta = 1 \text{ mm}^2 / \text{s}$ and density $\rho = 1000 \text{ kg} / \text{m}^3$.

Performans eğrileri kinematik viskozite $\eta = 1 \text{ mm}^2 / \text{s}$ ve yoğunluk $\rho = 1000 \text{ kg} / \text{m}^3$ temel alınarak oluşturulmuştur.

Pompalanan Sıvı: Kimyasal ve mekanik olarak aşındırıcı olmayan akışkan. Sıcaklık min=0° C max=40° C.
İzin verilen maksimum kum miktarı = 50 g/m³ izin verilen katı parçacık ölçüsü: Max 2mm
Liquid being pumped: Chemically and mechanically non aggressive. Temperature min=0° C max=40° C.
Maximum allowable solid quantity = 50 g/m³ solid dimension: Max 2mm
Liquide pompé: Chimiquement et mécaniquement non agressif. Temperature min=0° C max=40° C.
Quantité maximale de sable tolérée = 50 g/m³ Diamètre des particules solides: Max 2mm

2900 RPM'de çalışma aralığı:
Operating range at 2900 RPM:
Gamme de fonctionnement à 2900 RPM:

HP= 2 - 10
Qmax= 18 m³/h

En verimli noktada:
At the best efficiency point:
Au point du meilleur rendement:

Q= 12 m³/h
H= 129 m

Maksimum pompa dış çapı (Kablo muhafazası ile birlikte):
Maximum pump diameter (Including cable guard):
Diametre maximal de pompe (y compris le couvre-cable):

94 mm

Çıkış Çapı:
Outlet diameter:
Diametre d'orifice de refoulement:

2"

Maximum uygulama derinliği: Su seviyesinin 400 m altına kadar.
Maximum depth of application: Up to 400 m below the water level
Profondeur maximum d'utilisation: Jusqu'à 400 m sous le niveau de l'eau

Maksimum çalışma basıncı:
Maximum working pressure:
Pression de fonctionnement maxi.:

40 atm

Minimum sıvı seviyesi: Emiş süzgecinin altından itibaren 600 mm.
Minimum liquid level: 600 mm from bottom of suction grid
Niveau minimum du liquide: 600 mm au-dessus de la crépine d'aspiration

Maksimum basma yüksekliği:
Maximum head:
Hauteur manométrique maximale:

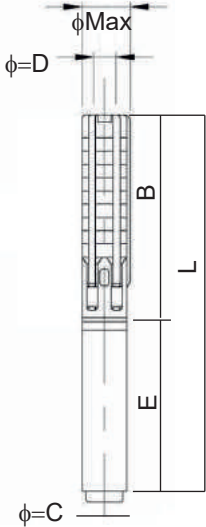
154 m

Fan tipi:
Impeller type:
Type de roue:

Semiaksiyel
Semiaxial
Demi axiale

İmalat ve güvenlik standartları:
Construction and safety standards:
Normes de construction et de sécurité:

TS 11146:1993 TS EN ISO 12100-1:2007
TS EN 809:2000 TS EN ISO 12100-2:2006
98/37/EC



phi=C



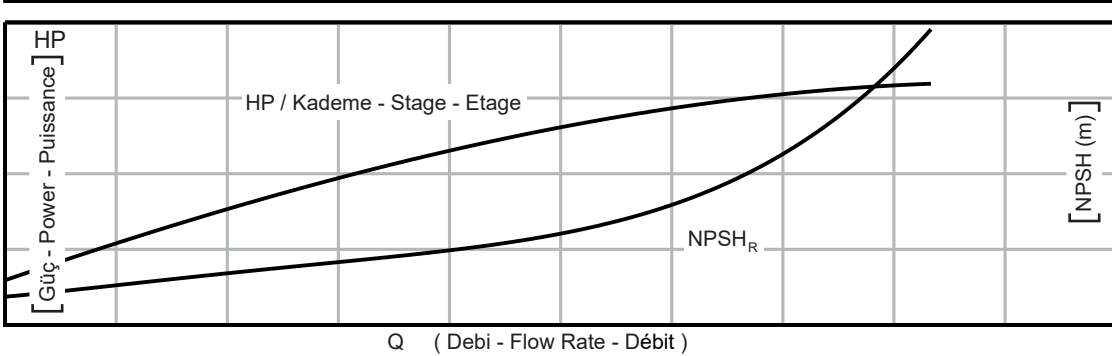
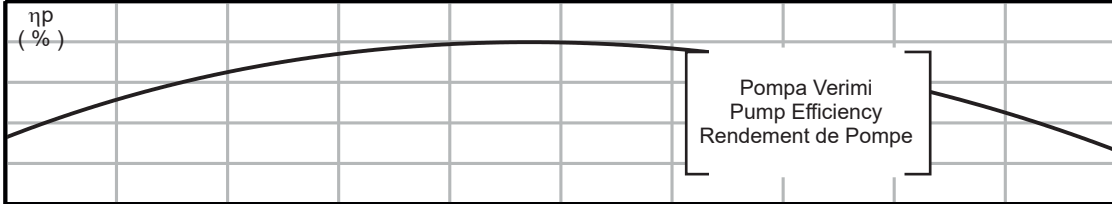
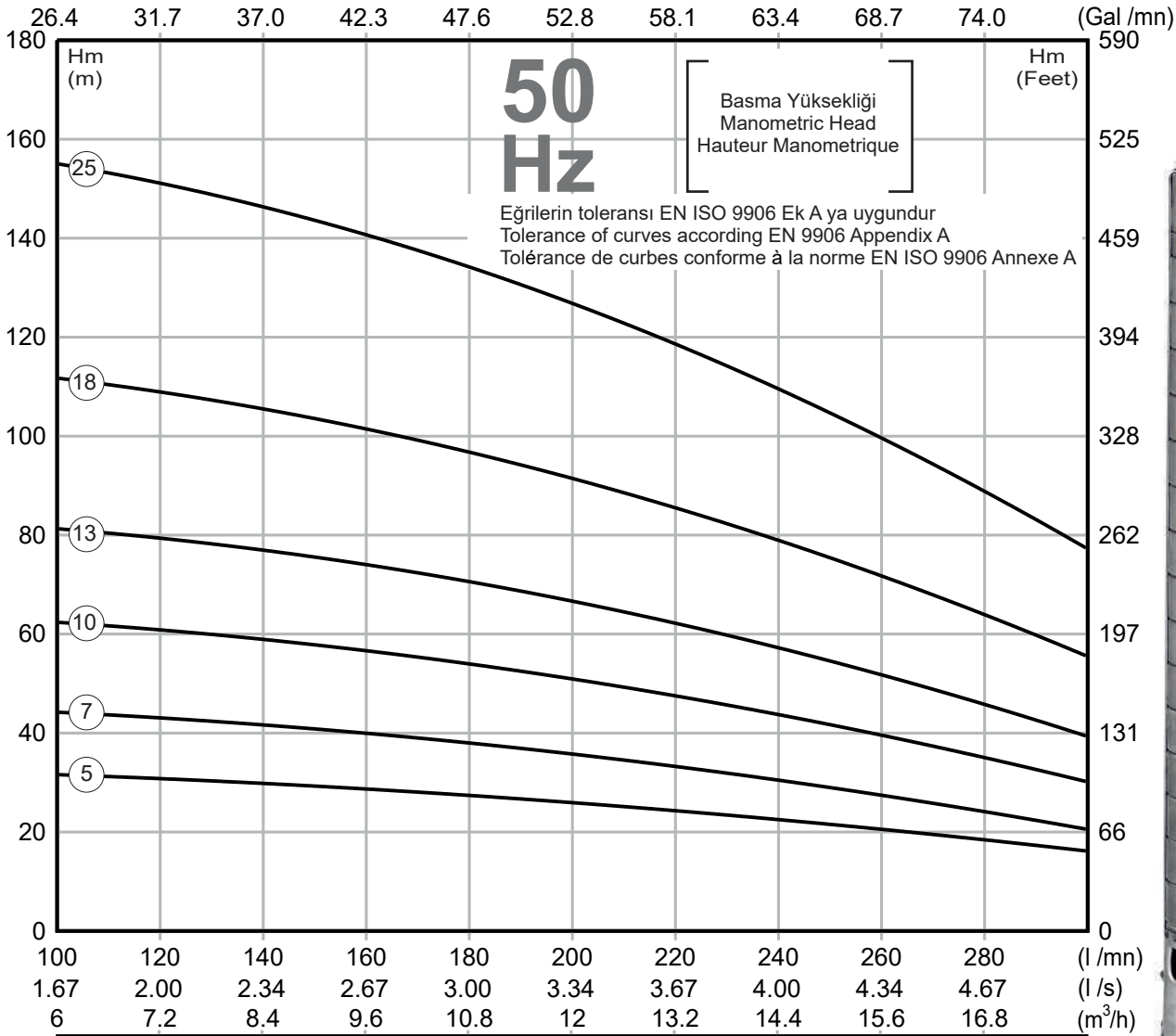
POMPA TİPİ PUMP TYPE TYPE DE POMPE	MOTOR MOTEUR		ÖLÇÜLER / DIMENSIONS (mm)								AĞIRLIK / WEIGHT / POIDS (kg)				
			1~		3~		1~		3~		1~		3~		
			HP	KW	L	L	E	E	B	Ø = C	Ø = D	Ø MAX	MOTOR MOTEUR	POMPA PUMP POMPE	TOPLAM TOTAL
S4 SP12 / 05	2	1,5	981	936	476	431	505	93	2"	94	13,5	11,6	5	18,5	16,6
S4 SP12 / 07	3	2,2	1144	1124	509	489	635	93	2"	94	14,7	13,9	6,3	21,0	20,2
S4 SP12 / 10	4	3	-	1378	-	548	830	93	2"	94	-	17,6	8,2	-	25,8
S4 SP12 / 13	5,5	4	-	1643	-	618	1025	93	2"	94	-	20,9	10,2	-	31,1
S4 SP12 / 18	7,5	5,5	-	2038	-	688	1350	93	2"	94	-	24,0	13,4	-	37,4
S4 SP12 / 25	10	7,5	-	2573	-	768	1805	93	2"	94	-	28,0	17,8	-	45,8

POMPA TİPİ PUMP TYPE TYPE DE POMPE	MOTOR MOTEUR		m ³ /h	0,0	6,0	7,2	8,4	9,6	10,8	12,0	15,0	18,0	
				l/sn	0,00	1,67	2,00	2,33	2,67	3,00	3,33	4,17	5,00
				Basma Yüksekliği (m) Head In Meters Hauteur Manométrique Totale En Metres	S4 SP12 / 05	2	1,5	33	32	31	30	28	27
S4 SP12 / 07	3	2,2	46	44	43	42	40	37	36	30	20		
S4 SP12 / 10	4	3	65	62	60	58	57	54	52	43	29		
S4 SP12 / 13	5,5	4	84	80	78	77	74	72	67	56	38		
S4 SP12 / 18	7,5	5,5	117	111	108	104	102	97	93	77	54		
S4 SP12 / 25	10	7,5	163	154	149	145	141	135	129	107	75		

Katalogtaki hidrolik karakteristikler çekvalf kayıplarını içermez.
Hydraulic characteristics of catalog don't include the loss of check-valve
Les caractéristiques hydrauliques de catalogue ne comprennent pas les pertes dans le clapet de retenue

Dönüş Hızı Rotation Speed Vitesse de Rotation 2900 RPM	Dönüş Yönü / Rotation Saatin Tersi Yönünde Counterclockwise Sens Anti - Horaire	Klepe Çıkışı / Outlet / Sortie 2" İçten Pasolu 11 Diş 2" Inside Threaded 11 TPI 2" Fileté Interieur 11 TPI	Mil Ucu / Shaft End / Fin d'Arbre NEMA Standardına Uygun According to NEMA Standard En Accord Norme NEMA	According to En accord norme EN ISO 9906 Normuna Uygun	Tarih / Date 10 / 2009
					Rev. 0

Hidrolik çalışma karakteristikleri 15°C deki suyla ve 1 bar atmosferik basınç altında alınmıştır.
The hydraulic working characteristics have been calculated with water at 15°C at the atmospheric pressure of 1 bar
Les caractéristiques hydrauliques de fonctionnement ont été prises avec eau à 15°C à la pression atmosphérique de 1 bar

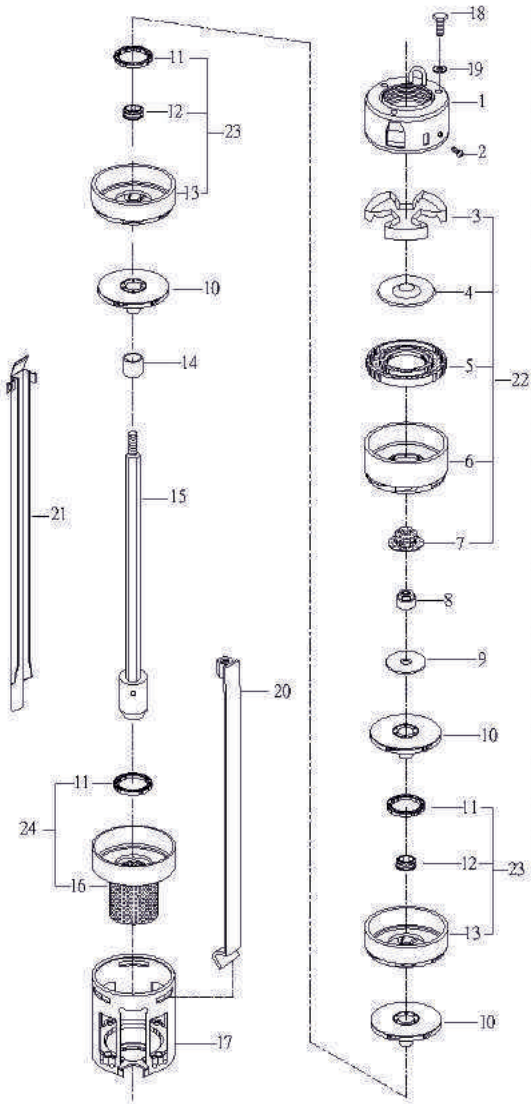


According to SGM-2015/44 regulation, this model is only for sales out of Turkey and EU or as a component of fire-fighting units.
Bu ürün SGM-2015/44 sayılı tebliğe göre sadece Türkiye ve Avrupa Birliği dışı ülkelere ya da yangın söndürme sistemlerinde kullanılmak üzere satışa uygundur.

Performance curves are based on the kinematic viscosity $\nu = 1 \text{ mm}^2 / \text{s}$ and density $\rho = 1000 \text{ kg} / \text{m}^3$.
Performans eğrileri kinematik viskozite $\nu = 1 \text{ mm}^2 / \text{s}$ ve yoğunluk $\rho = 1000 \text{ kg} / \text{m}^3$ temel alınarak oluşturulmuştur.

S4 SP2-SP3-SP4

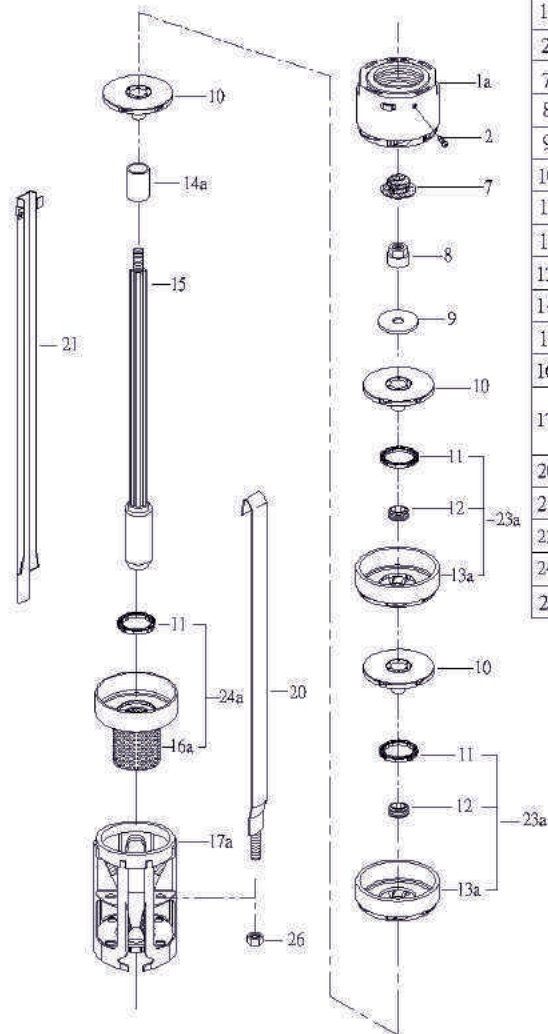
50 Hz



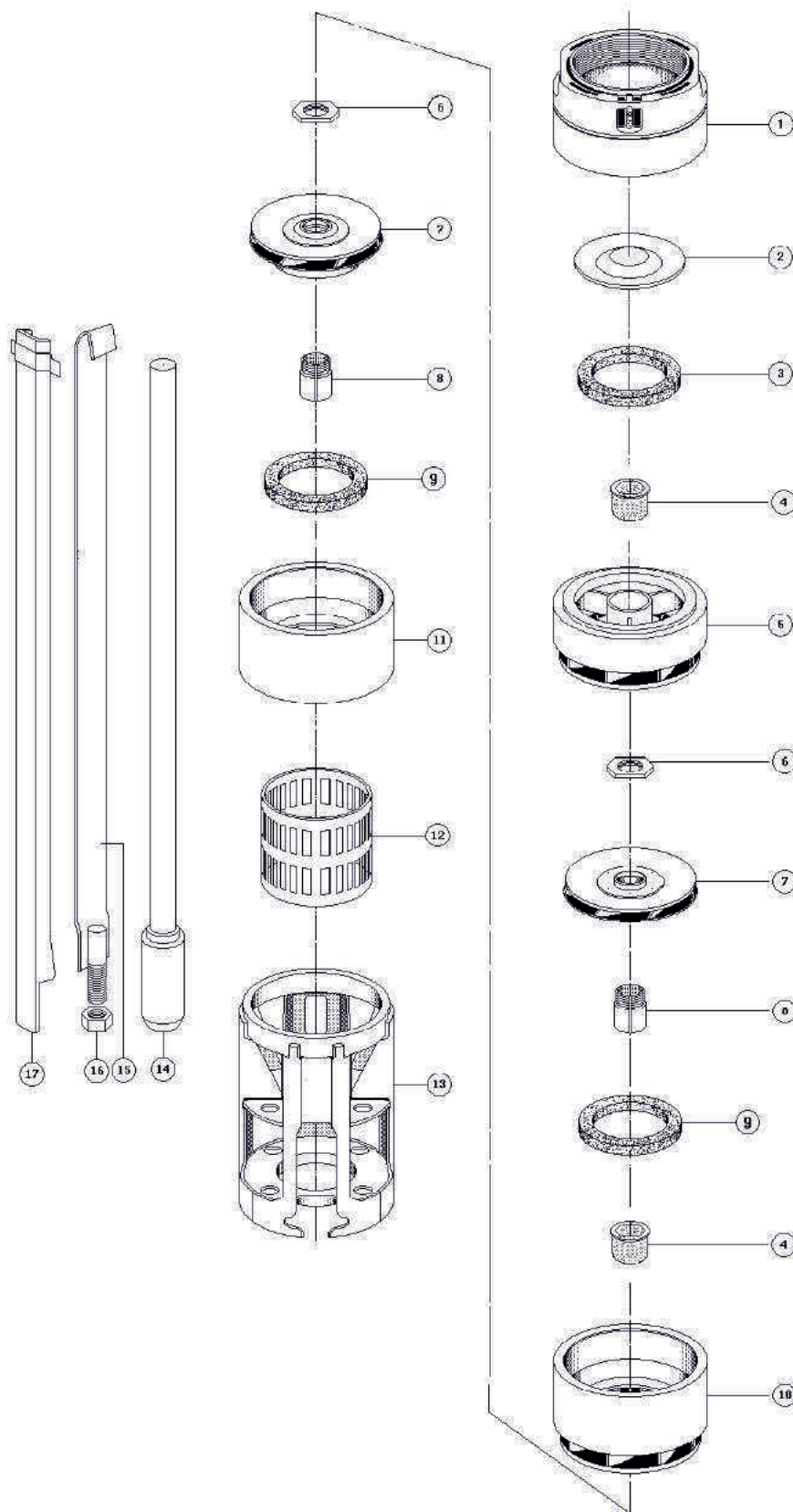
Description	
1	Discharge
2	Screw M5
3	Valve Guide
4	Valve Cone
5	Valve Seat
6	Valve Casing
7	Stop Ring
8	Lock Nut
9	Stop Ring Washer
10	Impeller
11	Neck Ring
12	Bearing
13	Diffuser
14	Spacer
15	Pump shaft /Coupling
16	Strainer
17	Suction interconnector
18	Screw M8
19	Washer
20	Strap
21	Cable Guard
22	Check Valve
23	Diffuser Assy
24	Strainer Assy

30 kademeye kadar
Upto stages of 30
Pour jusqu'a 30ème étage

31 kademe ve üstü için
For stages of 31 and more
Pour 31 étages et plus



Description	
1a	Discharge Chamber
2	Screw M5
7	Stop Ring
8	Lock Nut
9	Stop Ring Washer
10	Impeller
11	Neck Ring
12	Bearing
13a	Diffuser
14a	Spacer
15	Pump shaft / Coupling
16a	Strainer
17a	Suction interconnector
20	Strap
21	Cable Guard
23a	Diffuser Assy
24a	Strainer Assy
26	Nut M8

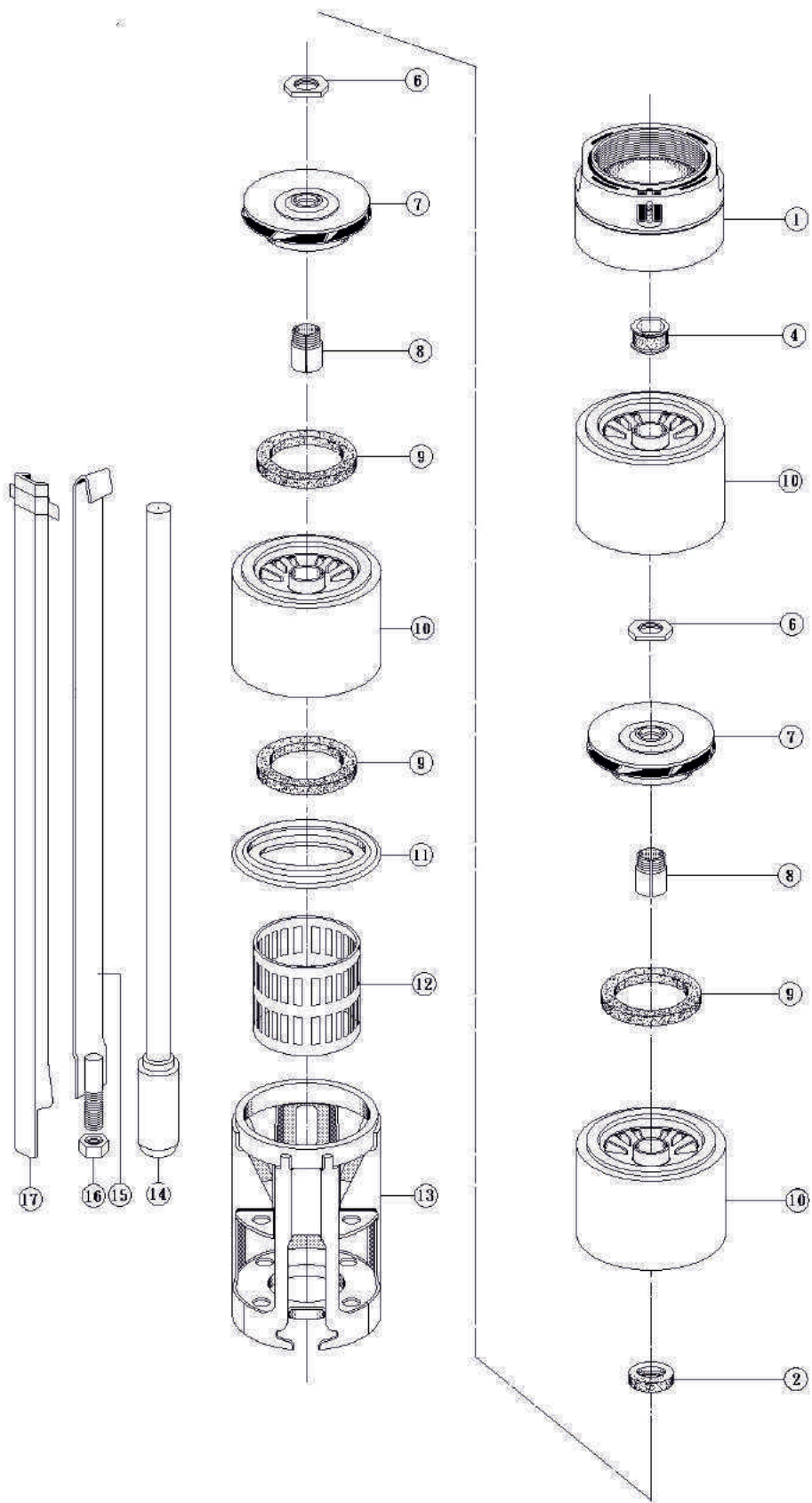


Description

1	Discharge
2	Valve Cone
3	Valve Seat
4	Bearing
5	Top intermediate Chamber
6	Split Cone Nut
7	Impeller
8	Split Cone
9	Neck Ring
10	Diffuser
11	Bottom Diffuser
12	Strainer
13	Suction interconnector
14	Pump shaft /Coupling
15	Strap
16	Nut
17	Cable Guard

S4 SP12

50 Hz



Description	
1	Discharge
2	Stop Ring
4	Bearing
6	Split Cone Nut
7	Impeller
8	Split Cone
9	Neck Ring
10	Diffuser
11	Guide
12	Strainer
13	Suction interconnector
14	Pump shaft /Coupling
15	Strap
16	Nut
17	Cable Guard

S4 SP2-SP3-SP4-SP8-SP12

Semiaksiyal Paslanmaz Pompalar Semiaxial Stainless Steel Pumps Pompes Immergé En Acier Inox

MALZEME LİSTESİ

PARÇA ADI	MALZEME
Mil	Paslanmaz çelik (AISI 304)
Mil segmanı	Paslanmaz çelik (AISI 304)
Kaplin	Paslanmaz çelik (AISI 304)
Emiş	Paslanmaz çelik (AISI 304)
Diffüzör sacı	Paslanmaz çelik (AISI 304)
Fan	Paslanmaz çelik (AISI 304)
Diffüzör	Paslanmaz çelik (AISI 304)
Diffüzör yatağı	Plastik
Denge yatak gövdesi	Paslanmaz çelik (AISI 304)
Denge yatağı	Plastik
Mesafe ayar burcu	Paslanmaz çelik (AISI 304)
Denge burcu	Paslanmaz çelik (AISI 304)
Cıvata	Paslanmaz çelik (AISI 304)
Rondela	Paslanmaz çelik (AISI 304)
Sübab gövdesi	Paslanmaz çelik (AISI 304)
Sübab oringi	Kauçuk
Sübab	Paslanmaz çelik (AISI 304)
S4 SP2 - S4 SP3 :	
Klepe 1 1/4" çıkışlı 11 diş	
S4 SP4 : Klepe 1 1/2" çıkışlı 11 diş	Paslanmaz çelik (AISI 304)
S4 SP8 - S4 SP12 :	
Klepe 2" çıkışlı 11 diş	
Süzgeç	Paslanmaz çelik (AISI 304)
Kablo muhafaza sacı	Paslanmaz çelik (AISI 304)
Lama	Paslanmaz çelik (AISI 304)

OPSİYONLAR

Pompa grubu : Soğutma kılıfı, Filtreli kılıf

DESCRIPTION MATERIAUX

NOM DE PIECE	MATERIEL
Arbre	Acier inox (AISI 304)
Segment d'arbre	Acier inox (AISI 304)
Accouplement	Acier inox (AISI 304)
Support	Acier inox (AISI 304)
Corps du diffuseur	Acier inox (AISI 304)
Roue	Acier inox (AISI 304)
Diffuseur	Acier inox (AISI 304)
l'anneau de maintien	Resine
Coussinet	Acier inox (AISI 304)
Coussinet	Resine
Coussinet	Acier inox (AISI 304)
Coussinet	Acier inox (AISI 304)
Vis	Acier inox (AISI 304)
Rondelle	Acier inox (AISI 304)
Corps de soupape	Acier inox (AISI 304)
Bague OR	Caoutchouc
Soupape	Acier inox (AISI 304)
S4 SP2 - S4 SP3 :	
S4 SP3 : Corps du clapet 1 1/4" sortie 11 TPI	
S4 SP4 : Corps du clapet 1 1/2" sortie 11 TPI	Acier inox (AISI 304)
S4 SP8 - S4 SP12 :	
Corps du clapet 2" sortie 11 TPI	
Crépine d'aspirant	Acier inox (AISI 304)
Gaine de câble	Acier inox (AISI 304)
Tirant	Acier inox (AISI 304)

LES OPTIONS

Moteur&Pompe: Chemise de refroidissement, d'aspiration

MATERIALS DESCRIPTION

PART NAME	MATERIAL
Shaft	Stainless steel (AISI 304)
Retainer	Stainless steel (AISI 304)
Coupling	Stainless steel (AISI 304)
Support	Stainless steel (AISI 304)
Body	Stainless steel (AISI 304)
Impeller	Stainless steel (AISI 304)
Diffuser	Stainless steel (AISI 304)
Bearing	Resine
Bearing housing	Stainless steel (AISI 304)
Bearing	Resine
Bushing	Stainless steel (AISI 304)
Bushing	Stainless steel (AISI 304)
Screw	Stainless steel (AISI 304)
Washer	Stainless steel (AISI 304)
Valve housing	Stainless steel (AISI 304)
O-ring	Rubber
Valve	Stainless steel (AISI 304)
S4 SP2 - S4 SP3 :	
S4 SP3 : Valve body 1 1/4"11 TPI	
S4 SP4 : Valve body 1 1/2" 11 TPI	Stainless steel (AISI 304)
S4 SP8 - S4 SP12 :	
Valve body 2" 11 TPI	
Strainer	Stainless steel (AISI 304)
Cable guard	Stainless steel (AISI 304)
Tie-bolt	Stainless steel (AISI 304)

OPTIONS

Motor-pump : Cooling shroud, Suction shroud

DESCRIPCIÓN DE LOS MATERIALES

NOMBRE DE LA PARTE	MATERIAL
Eje	Acero inoxidable (AISI 304)
Anillo de retención	Acero inoxidable (AISI 304)
Acoplador	Acero inoxidable (AISI 304)
Soporte	Acero inoxidable (AISI 304)
Cuerpo difusor	Acero inoxidable (AISI 304)
Impulsor	Acero inoxidable (AISI 304)
Difusor	Acero inoxidable (AISI 304)
Cojinete	Resina
Cojinete	Acero inoxidable (AISI 304)
Cojinete	Resina
Caquillo	Acero inoxidable (AISI 304)
Caquillo	Acero inoxidable (AISI 304)
Tornillo	Acero inoxidable (AISI 304)
Placa	Acero inoxidable (AISI 304)
Cuerpo de válvula	Acero inoxidable (AISI 304)
Junta torica	Goma
Válvula	Acero inoxidable (AISI 304)
S4 SP2 - S4 SP3 :	
Cuerpo válvula 1 1/4" salida 11 TPI	
S4 SP4 : Cuerpo válvula 1 1/2" salida 11 TPI	Acero inoxidable (AISI 304)
S4 SP8 - S4 SP12 :	
Cuerpo válvula 2" salida 11 TPI	
Rejilla	Acero inoxidable (AISI 304)
Protector del cable	Acero inoxidable (AISI 304)
Tirante	Acero inoxidable (AISI 304)

OPCIONES

Motor & Bombas: Camisa de refrigeration, camisa de aspiracion